



# ST PAUL'S FIELD, LEE VALLEY

Landscape and Path Network Design



12<sup>th</sup> April 2022



View Across 'Nazeing Meads North' and Looking West

---

# ST PAUL'S FIELD, LEE VALLEY

Landscape and Path Network Design

## CONTENTS

### 1. Landscape Context

- 1.1 Lee Valley Regional Park
- 1.2 Site Location

### 2. The Site

- 2.1 St. Paul's Field

### 3. Baseline Conditions

- 3.1 Flood Risk from Surface Water
- 3.2 Levels and Topography
- 3.3 Circulation and Connectivity
- 3.4 Existing Vegetation

### 4. Site Assessment

- 4.1 Intervisibility
- 4.2 Sightliness/Orientation
- 4.3 landscape nodes
- 4.4 Specimen trees
- 4.5 Evidence of Muscle shells
- 4.6 Connectivity
- 4.7 Opportunities for landscape features beneath pylons
- 4.8 Landscape rest area adjacent to Dobbs Weir
- 4.9 Potential route away from existing glass house boundary
- 4.10 Potential additional route
- 4.11 Improve quality of existing stream
- 4.12 Create attractive gateway to site

### 5. Constraints & Opportunities

### 6. Concept Diagrams

- 6.1 Concept Option 1
- 6.2 Concept Option 2
- 6.3 Concept Option 3

### 7. Viable Options

- 7.1 Viable Option 3A
- 7.2 Viable Option 3B
- 7.3 Viable Option 3C

### 8. Landscape Proposals

- 8.1 Northern Gateway Entrance
- 8.2 Realignment of Recreational Route
- 8.3 Feature Bridge
- 8.4 Landscape Rest Areas
- 8.5 Landscape Recreational Area
- 8.6 Access Restrictions
- 8.7 Defensible Planting
- 8.8 Enhancement Planting
- 8.9 Southern Gateway Entrance
- 8.10 Potential Link Route
- 8.11 General Improvements

### 9. Appendix A

# 1. Landscape Context

## 1.1 Lee Valley Regional Park

The Lee Valley Regional Park ('The Park') was created on the 1st January 1967, through an Act of Parliament: the Lee Valley Regional Act 1966.

The creators of the Park wanted to provide a destination for the growing populations of London, Essex and Hertfordshire to enjoy recreation and leisure activities unavailable elsewhere. The corridor alongside the River Lee was at that time a mix of derelict and operational industrial land, undeveloped marshlands, water supply reservoirs, farmland, glasshouses and municipal parks. The new Regional Park was designed to transform these areas to create a continuous corridor of open space and built leisure and sports facilities that would provide a wide range of recreation and leisure opportunities.


Much has been achieved since the Park was created. The Park now includes 10,000 acres (over 4,000 ha) and winds its way 26 miles: along the banks of the River Lee from Ware in Hertfordshire, down through Essex, North London, and through parts of the Olympic Park to East India Dock Basin on the River Thames.

The Park is a fantastic mix of world class sport and leisure venues, heritage sites, gardens, nature reserves and riverside trails; offering an endless range of things to do. It is easy to reach by bike, car, train, or on foot, and visitors can spend anything from a few hours to a few days enjoying and exploring.

## 1.2 Site Location

St Paul's Field ('the Site') is located within the Lee Valley Regional Park. The site consists of a parcel of land extending to approximately 38 acres, which is situated within the Lee Valley approximately 5 miles south west of Harlow town centre and 2.5 miles east of Broxbourne. The Site is located to the south of Dobb's Weir Road and to the north of Meadgate Road. Nazeing Meads sits immediately to the west of the Site. The Site was historically used as a sand and gravel extraction pit that has been subsequently backfilled with landfill. It currently comprises rough scrubland vegetation with a number of informal tracks across it.



 Location of St. Paul's Field

## 2. The Site

### 2.1 St Paul's Field

St Paul's Field is situated to the north of Meadgate Road and south of Dobb's Weir Road Nazeing, Essex. The area has been in possession of the Lee Valley Regional Park Authority until recently when part of the land was sold. The Site has history of being ex-industrial land which has since then been taken over by nature. The site has also suffered from contamination in the past and levels of current contamination are unknown but not considered to be high risk.

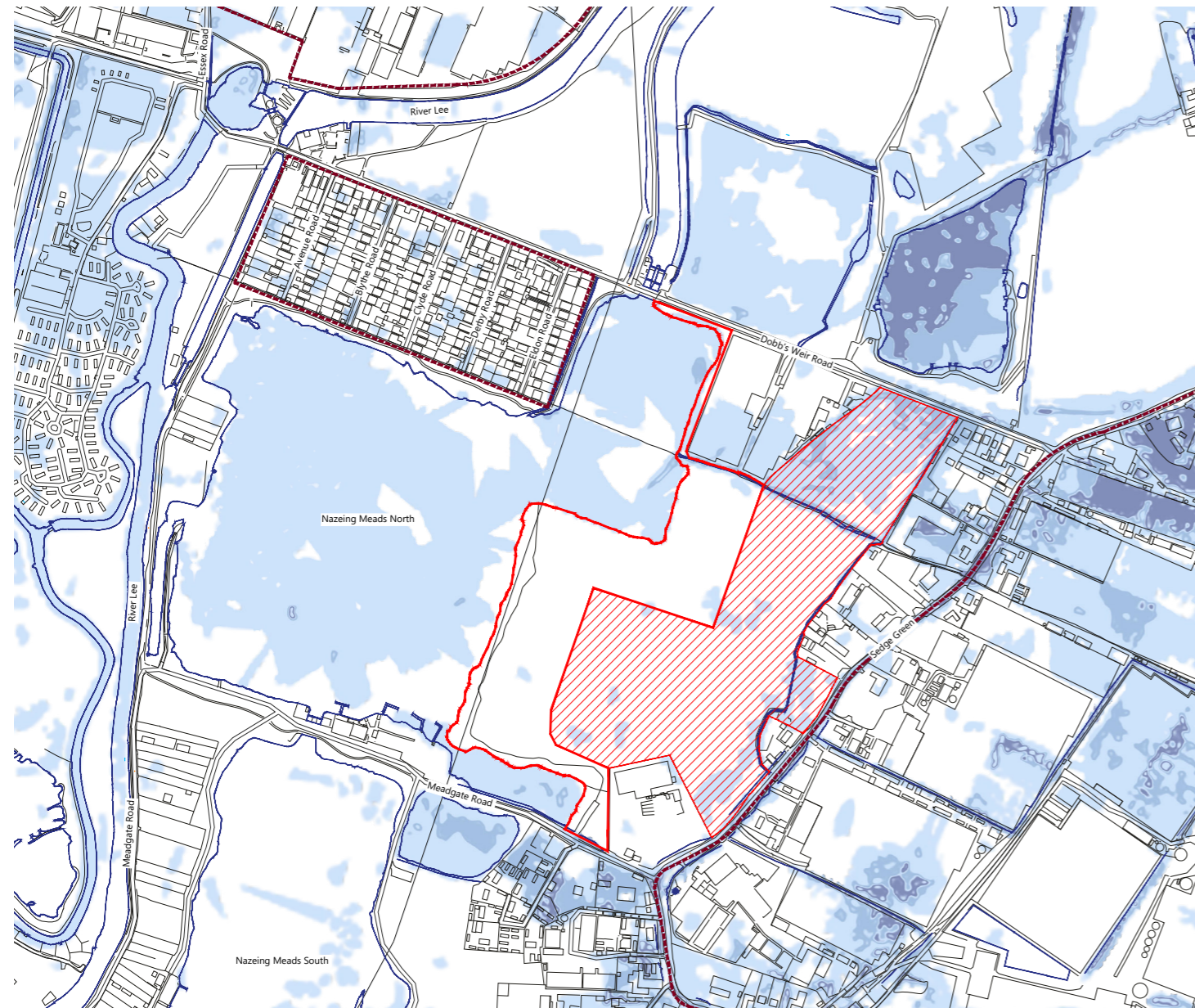
Access to fishing swims on Nazeing north lagoon have been kept open by the Authorities fisheries department and the fishing rights are in the process of being contracted out to a new company to manage.



- Lee Valley Regional Park Boundary
- Extent of Site
- ▨ Neighbouring Land for Potential Access

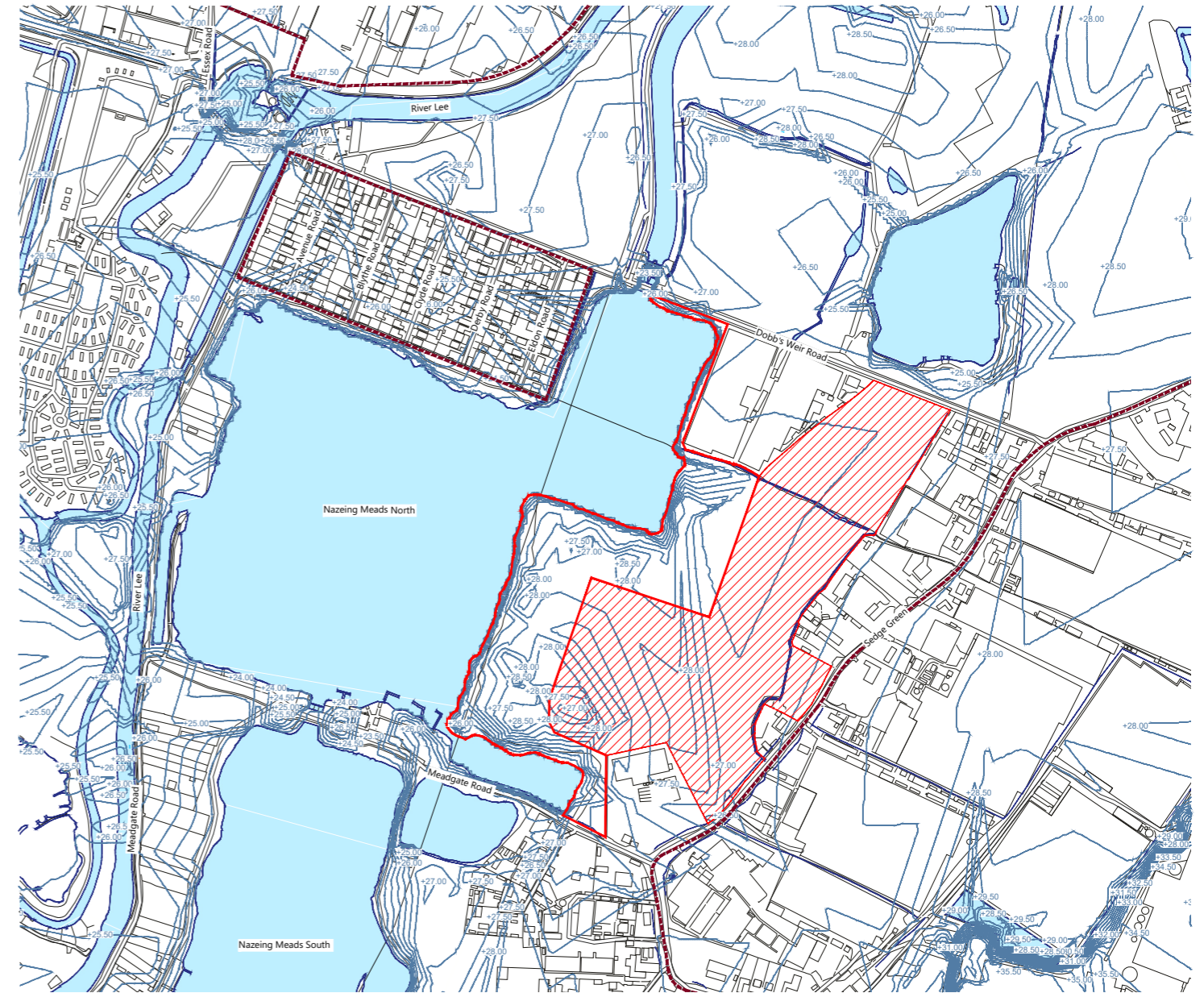
# 3. Baseline Study

## 3.1 Flood Risk from Surface Water



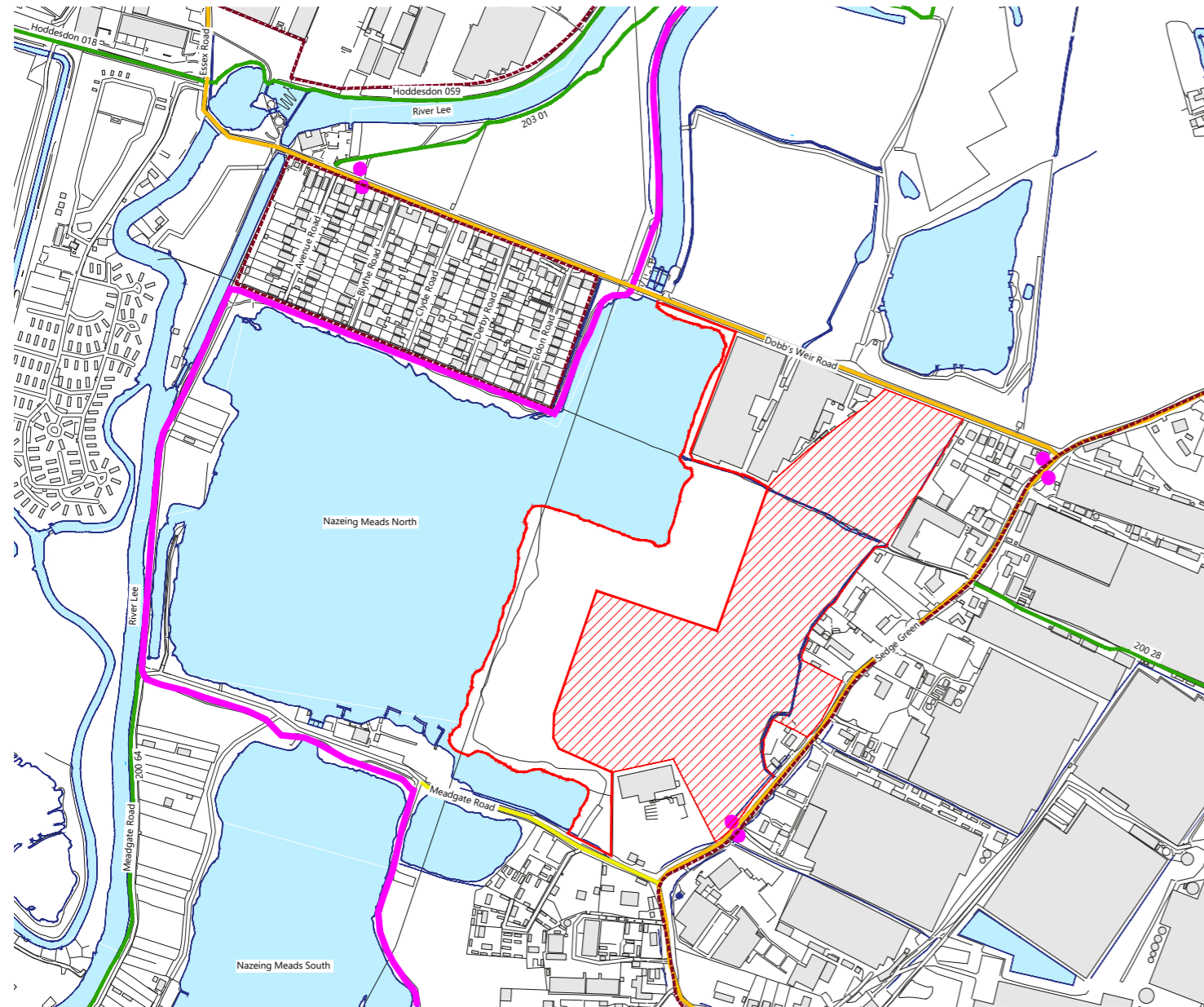
- Lee Valley Regional Park Boundary
- Extent of Site
- Neighbouring Land for Potential Access
- Flood Zone 1
- Flood Zone 2
- Flood Zone 3

## 3.2 Levels and Topography



- Lee Valley Regional Park Boundary
- Extent of Site
- Neighbouring Land for Potential Access
- 0.5m Contours

### 3.3 Circulation and Connectivity



- Lee Valley Regional Park Boundary
- Extent of Site
- Neighbouring Land for Potential Access
- Public Footpath
- National Cycle Route 1
- B road
- Road less than 4m wide
- Bus Stop

### 3.4 Existing Vegetation



- Lee Valley Regional Park Boundary
- Extent of Site
- Neighbouring Land for Potential Access
- Existing Trees
- Unimproved Grassland
- Reeds
- Shrub & Unimproved Grassland
- Shrub
- Broadleaf Woodland
- Broadleaf Woodland & Shrub
- Coniferous Woodland
- Coniferous Woodland & Shrub
- Mixed Woodland

## 4. Site Assessment

### 4.1 Intervisibility (1)

Key locations along the waters edge provides direct lines of sight from one position to another providing opportunities to create a strong wayfinding strategy.

### 4.2 Sightliness/Orientation (2)

Views of landscape features within the local context of the Lee Valley Regional Park, (Pylons, Chimneys, Steeples & other architectural features) aid in orientation within St Paul's Field while reinforcing the landscape character of the Lee Valley Regional Park.

### 4.3 Landscape Nodes (3)

A number of landscape nodal spaces have been identified along the waters edge. These spaces occur at transitional points and provide opportunities for design features, creating a hierarchy of landscape spaces.

### 4.4 Specimen Trees (4)

A number of specimen trees of high quality have been identified. These specimens provide enhanced landscape amenity value within St Paul's Field.

### 4.5 Evidence of Muscles within Nazeing Meads (5)

Discarded muscle shells were found along the waters edge. Opportunities to integrate design elements that reflect the local flora and fauna of St Paul's Field to ground the Site in its local context.

### 4.6 Connectivity (6)

Opportunities to connect to existing Lee Valley recreational routes (Tale of Two Rivers & Rye Meads Discovery Cycle Routes, Fishers Green Foray Walk & Peddlers Paradise Running & Cycle Routes), enhancing overall local connectivity.

### 4.7 Opportunities for Landscape Features Beneath Pylons (7)

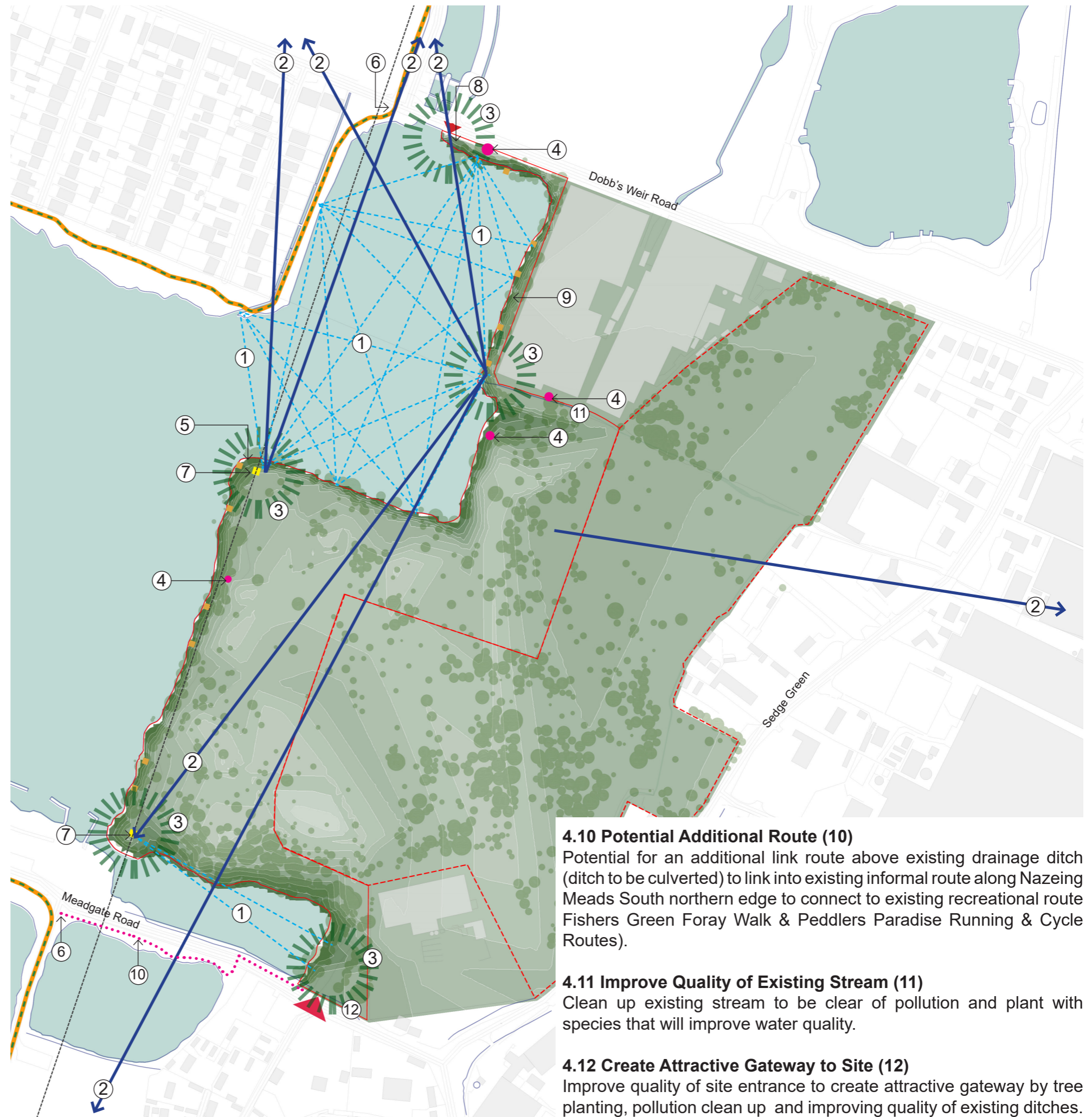
The National Grid Pylons are a dominant landscape feature within the Site. The locations of the pylons provide a unique perspective of these structures that are typically inaccessible. These structures are become synonymous within the Lee Valley Regional Park and provide opportunities to create unique landscape features within the site.

### 4.8 Landscape Rest Area Adjacent to Dobbs Weir (8)

An area in the northwest corner of the site, adjacent to Dobbs Weir has potential for a landscape nodal/gateway space to mark potential entrance into St Paul's Field. This space has significant intervisibility within Nazeing Meads North elevating this portion of the site within the landscape hierarchy to act as a significant gateway space.

### 4.9 Potential Route Along Waters Edge (9)

Potential for a route along the waters edge to keep visitors away from the Glass House boundary fence and plant a native hedge along existing fence line as defensible boundary.



### 4.10 Potential Additional Route (10)

Potential for an additional link route above existing drainage ditch (ditch to be culverted) to link into existing informal route along Nazeing Meads South northern edge to connect to existing recreational route Fishers Green Foray Walk & Peddlers Paradise Running & Cycle Routes).

### 4.11 Improve Quality of Existing Stream (11)

Clean up existing stream to be clear of pollution and plant with species that will improve water quality.

### 4.12 Create Attractive Gateway to Site (12)

Improve quality of site entrance to create attractive gateway by tree planting, pollution clean up and improving quality of existing ditches.





1. Strong intervisibility within Nazeing Meads North



2. Sightline to landscape features within the local context of the Lee Valley Regional Park



3. Landscape nodal spaces providing opportunities for design features and interpretation



4. Existing specimen trees provide enhanced landscape amenity value within St Paul's Field



5. Evidence of muscles within Nazeing Meads. Opportunities to integrate design elements that reflect the local flora and fauna of St Paul's Field.



6. Connection to existing Lee Valley recreational routes via existing infrastructure



7. Opportunities for landscape features beneath pylons



8. Landscape rest area adjacent to Dobbs Weir



9. Potential for a route along waters edge to keep visitors away from the Glass House boundary fence



10. Potential for an additional link route above existing drainage ditch (ditch to be culverted) to connect to existing recreational route















11. Clean up existing stream to be clear of pollution and plant with species that will improve water quality



12. Improve quality of site entrance to create attractive gateway by tree planting, pollution clean up and improving quality of existing ditches

# 5. Constraints & Opportunities

## Landscape Constraints

-  400KV Pylon  
*Existing prominent structures within the site however they are characteristic of the fabric of the Lee Valley*
-  400KV Pylon Overhead Lines
-  Existing Topography
-  Area Displaying Evidence of Badger Setts  
*to be confirmed in Preliminary Ecology Assessment*
-  Area of Cleared Vegetation  
*evidence of land disturbance thought to be associated with Lignacite*
-  Area of Dense Tree and Scrub Vegetation  
*dense vegetation restricting access potentially resulting in a greater disturbance upon the landscape due to landscape works*
-  Surface Water - High Extent of Flooding
-  Surface Water - Medium Extent of Flooding
-  Surface Water - Low Extent of Flooding
-  Adjacent Road Network  
*with a limited amount of roadside paths limiting potential linkage to existing routes*
-  Existing Roadside Green Verge  
*no pavement limiting potential linkage to existing routes*
-  Existing Commercial Sites Adjacent to Site Boundary  
*careful consideration of potential treatment to site boundaries is required*

## Landscape Opportunities

-  Existing Car Park for Fisherman Use Only
-  Existing Fisherman Swims  
*provide opportunities for views of Nazeing Meads and provides amenity function to the site*
-  Existing Vegetation  
*to be retained, and enhanced with maintenance operations carried out where required improving overall quality of vegetation and ecological value*
-  Existing Track for Pylon Maintenance and Fisherman Swim Access  
*provides opportunities for alignment of new route with minimal disturbance to the existing landscape*
-  Existing Roadside Path  
*opportunities for linkage with existing routes*
-  Existing Site Access
-  Neighboring Land for Potential Access Opportunities
-  Betterment to Waters Edge  
*through management of waterfront vegetation to enhance ecology landscape character and views of Nazeing Meads and the amenity value of new route*
-  Reinstate / Repair Existing Timber Bridge
-  Potential Point of Linkage with Existing Recreational Routes
-  Potential for Design Feature  
*location provides dual aspect over Nazeing Meads and is an important landscape node along the route*
-  Existing Lee Valley Recreational Routes  
*opportunities to connect to existing recreational routes enhancing the Lee Valley circulation network*
-  Existing National Cycle Network Route 1  
*opportunities to connect to the National Cycle Network*
-  Views over Nazeing Meads  
*opportunities to enhance views over Nazeing Meads creating a stronger relationship between the user and the landscape*

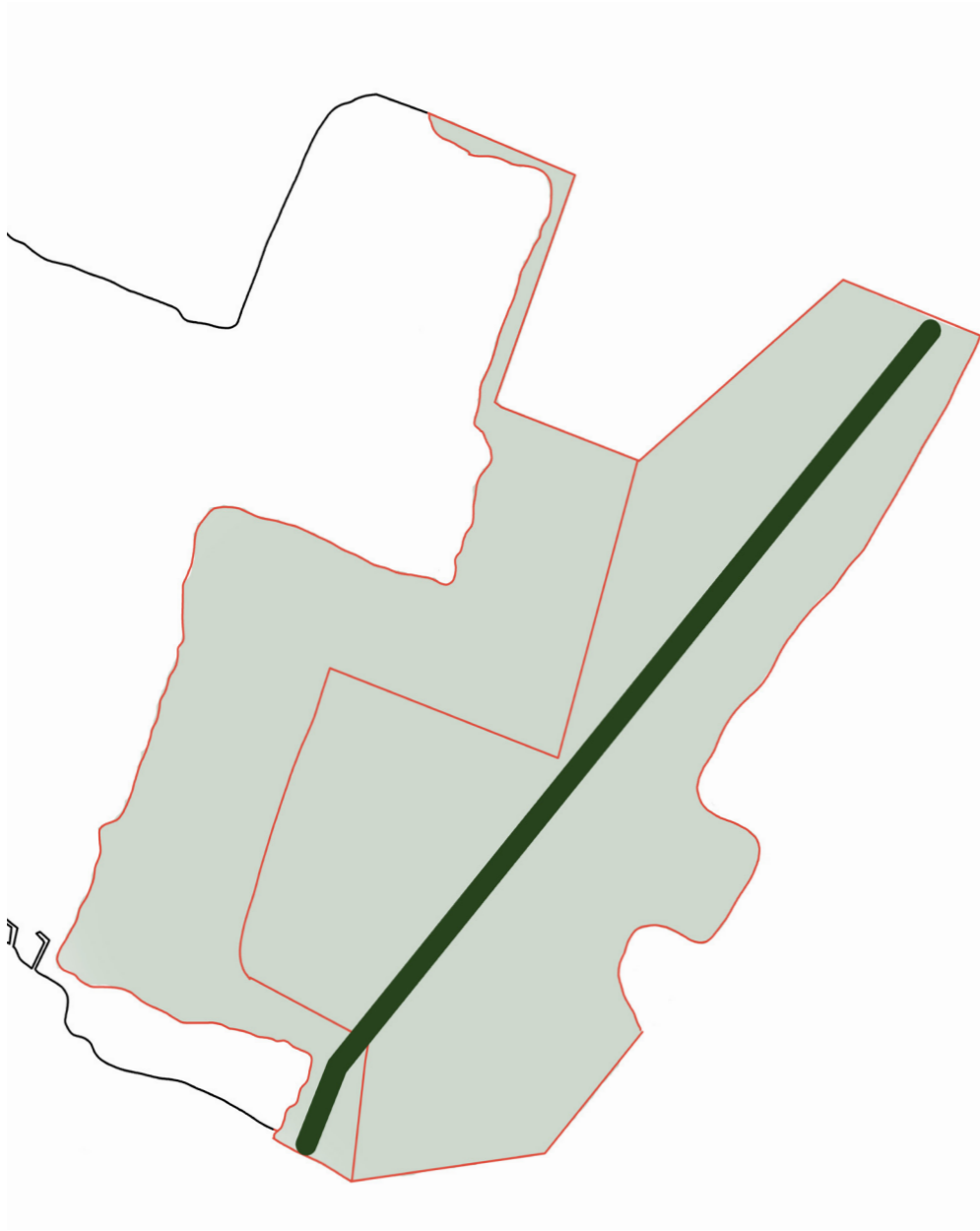




View Across 'Nazeing Meads North' Looking South

## 6. Concept Diagrams

### CONCEPT 1 - DIRECT ROUTE



#### ADVANTAGES

- Opportunities to enhance existing landscape on site

#### LIMITATIONS

- Does not utilize views on site.
- Requires permission from Lignacite to access through their site
- Northeast of site ,prone to medium to high extent of flooding
- No footpath on Dobb's Weir Road

#### ASSESSMENT

**Option recommended to be disregarded** due to lack of pedestrian footpath along Dobb's Weir Road

### CONCEPT 2 - MEANDERING ROUTE



#### ADVANTAGES

- Opportunities to enhance existing landscape on site
- Utilizes a portion of existing maintenance route on site
- Views across Nazeing Meads North fishing pond

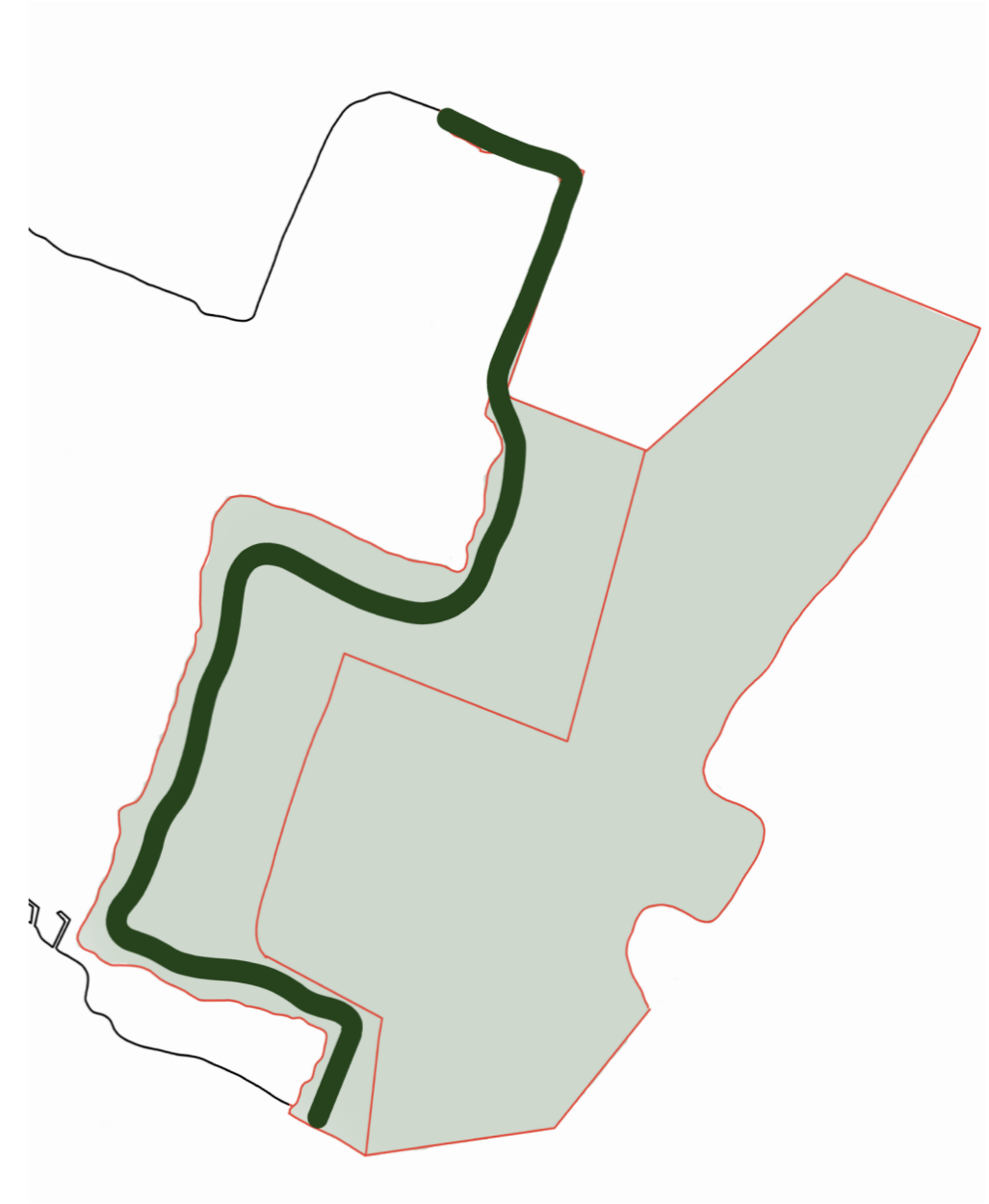
#### LIMITATIONS

- Requires permission from Lignacite to access through their site
- Northeast of site, prone to medium to high extent of flooding
- No footpath on Dobb's Weir Road

#### ASSESSMENT

**Option recommended to be disregarded** due to lack of pedestrian footpath along Dobb's Weir Road

### CONCEPT 3 - DESIRE LINE ROUTE



#### ADVANTAGES

- Opportunities to connect to Dobb's Weir Road
- Opportunities to enhance existing landscape on site
- Opportunities to connect to National Cycle Trail Route 1
- Utilizes existing Maintenance track on site
- Utilizes views across Nazeing Meads North fishing pond
- Has footpath access from Dobb's Weir Road
- Opportunities to connect to existing Lee Valley recreational routes via footpath along Dobb's Weir Road

#### LIMITATIONS

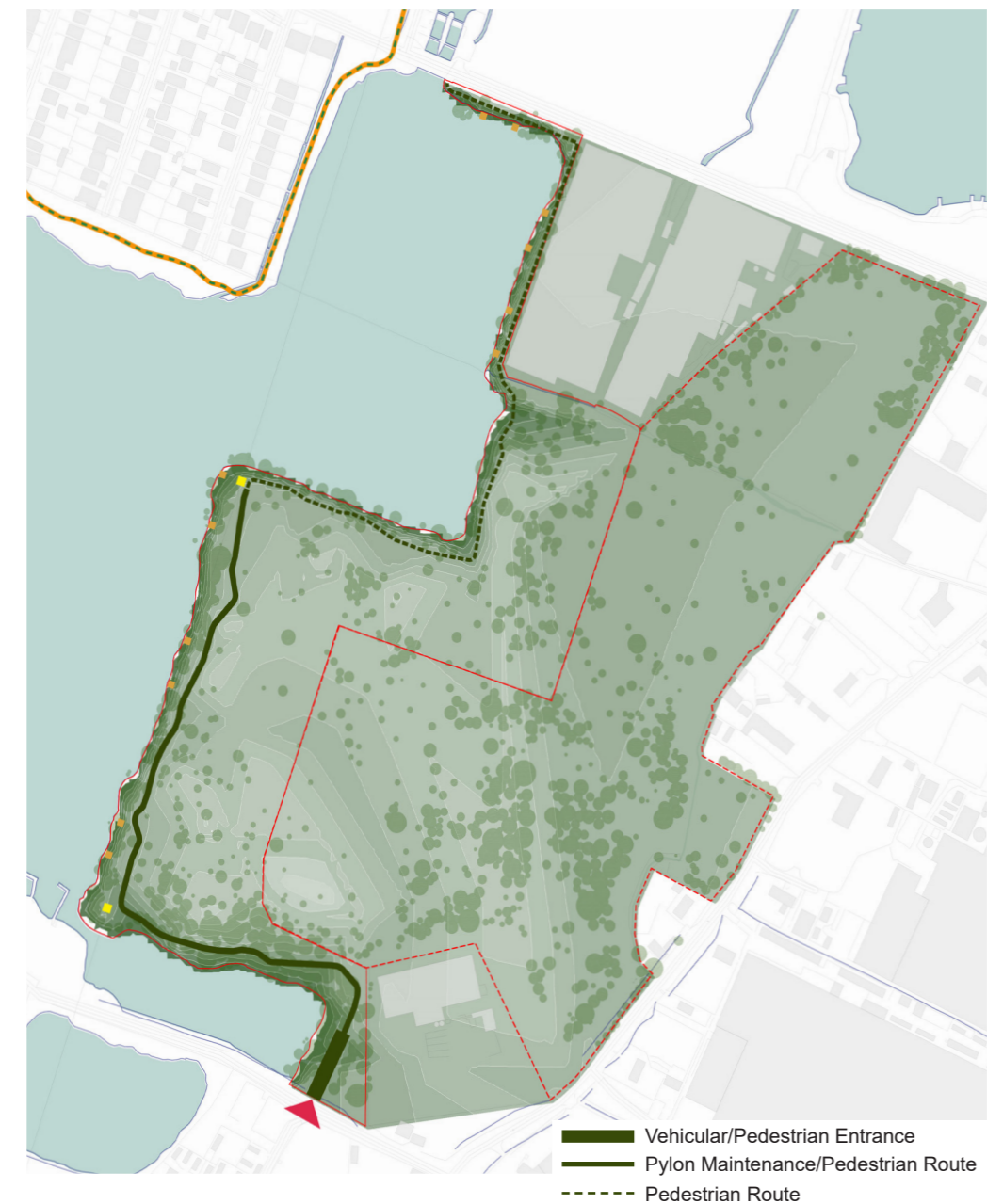
- Fishing platforms could be used by recreational visitors causing maintenance issues

#### ASSESSMENT

**Option recommended to be progressed**

# 7. Viable Options

## VIABLE OPTION 3A

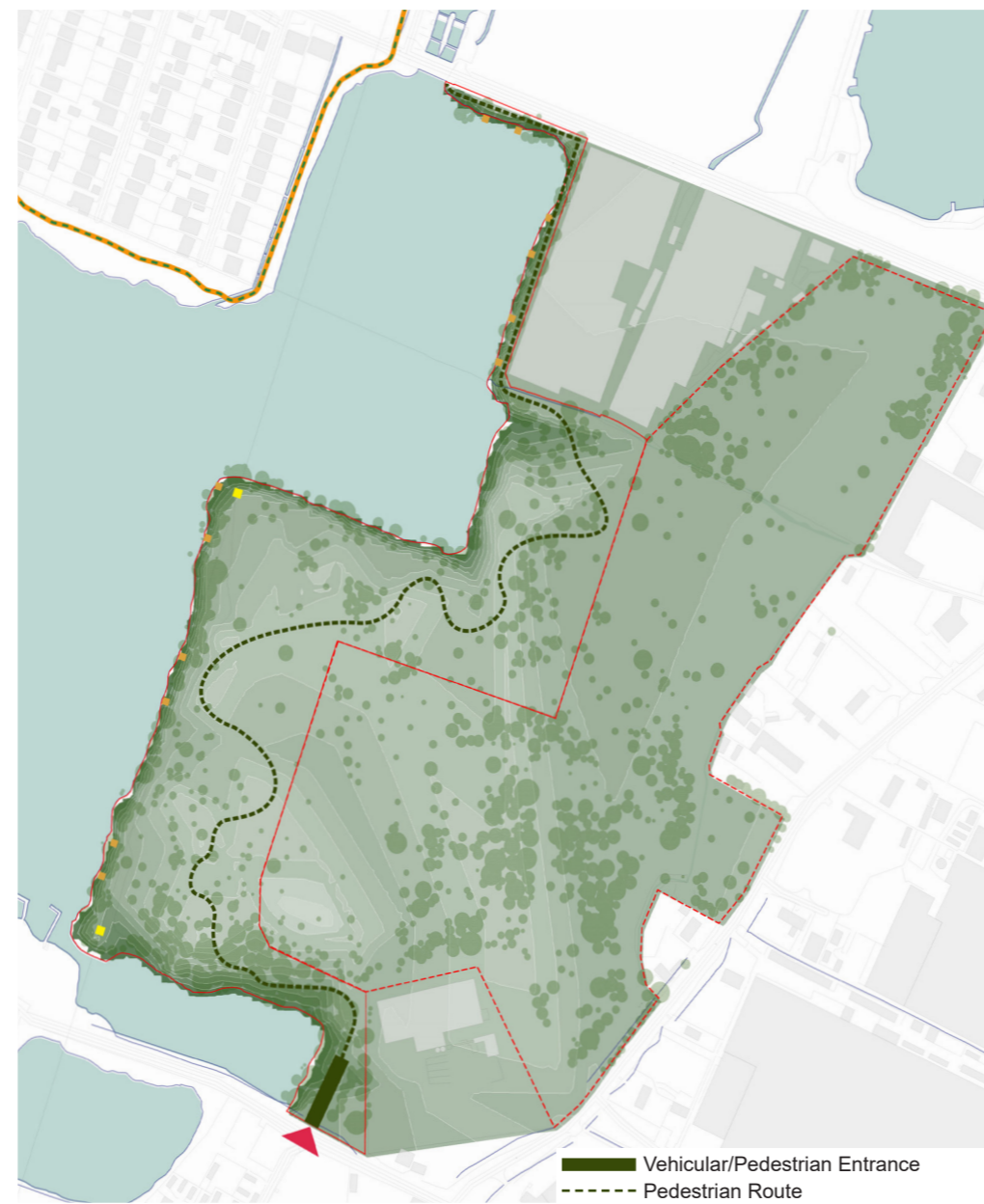


- ADVANTAGES**
- Provides connectivity to existing Lee Valley Recreational Routes
  - Enhancement to Nazeing Meads North waters edge
  - Provides connectivity to National Cycle Trail Route 1
  - Utilizes existing maintenance track on site
  - Utilizes views across Nazeing Meads North and beyond
  - Provides design features at key nodal spaces along waters edge
  - Proposed route along waters edge enhances user experience

- LIMITATIONS**
- Fishing platforms potentially used by recreational visitors causing maintenance issues
  - Pylon structures along recreational route

**ASSESSMENT**  
**Recommended Option**

## VIABLE OPTION 3B



- ADVANTAGES**
- Provides connectivity to existing Lee Valley Recreational Routes
  - Proposed route does not bring visitors near existing Pylons
  - Proposed route does not bring visitors near existing fishing swims

- LIMITATIONS**
- Does not utilise views across Nazeing Meads and beyond the site
  - Mundane user experience
  - Disregarding unique site features

**ASSESSMENT**  
**Not favourable**

## VIABLE OPTION 3C



- ADVANTAGES**
- Provides connectivity to existing Lee Valley Recreational Routes
  - Proposed route does not bring visitors near existing Pylons
  - Proposed route does not bring visitors near existing fishing swims

- LIMITATIONS**
- Requires permission from Lignacite to access through their site
  - Does not utilise views across Nazeing Meads and beyond the site
  - Mundane user experience
  - Disregarding unique site features

**ASSESSMENT**  
**Not favourable**

# 8. Landscape Proposals

## 8.1 Northern Gateway Entrance (1)

Northern entrance to Site, visible from multiple locations in the local vicinity and within St Paul's Field therefore it is a space of high value. This space create a contemporary seating area including a simple bench and area of hard landscape, providing rest area with views over Nazeing Meads North, with high quality surface materials to reflect significance of the space within the overall landscape strategy.

## 8.2 Realignment of Recreational Route (2)

The intent is to keep visitors away from the site boundary and bring them closer to the waters edge. The proposed route will weave between the existing trees creating a better relationship between the new recreational route and Nazeing Meads North. Planting native hedge species as a defensible edge along the glass house site boundary should not create overshadowing while implementing a defensible edge.

## 8.3 Feature Bridge (3)

Implementation of a feature bridge to replace the existing bridge. New feature bridge will provide a design feature along the route and a viewing location over Nazeing Meads North.

## 8.4 Landscape Rest Areas (4)

Provision of a number of simple bench features at strategic locations along the route, provides a rest and viewing area along the waters edge will enhance the recreational value of the route and provide opportunities for visitors to enjoy the landscape.

## 8.5 Landscape Recreational Area (5)

To aid the integration of the Pylons into the landscape, provision of recreational areas beneath these structures is proposed. These recreational areas will consist of formal and informal seating opportunities with swathes of wildflower planting and a bird hide to encourage bird watchers and simple activities such as boules courts that wont effect maintenance.

## 8.6 Access Restrictions (6)

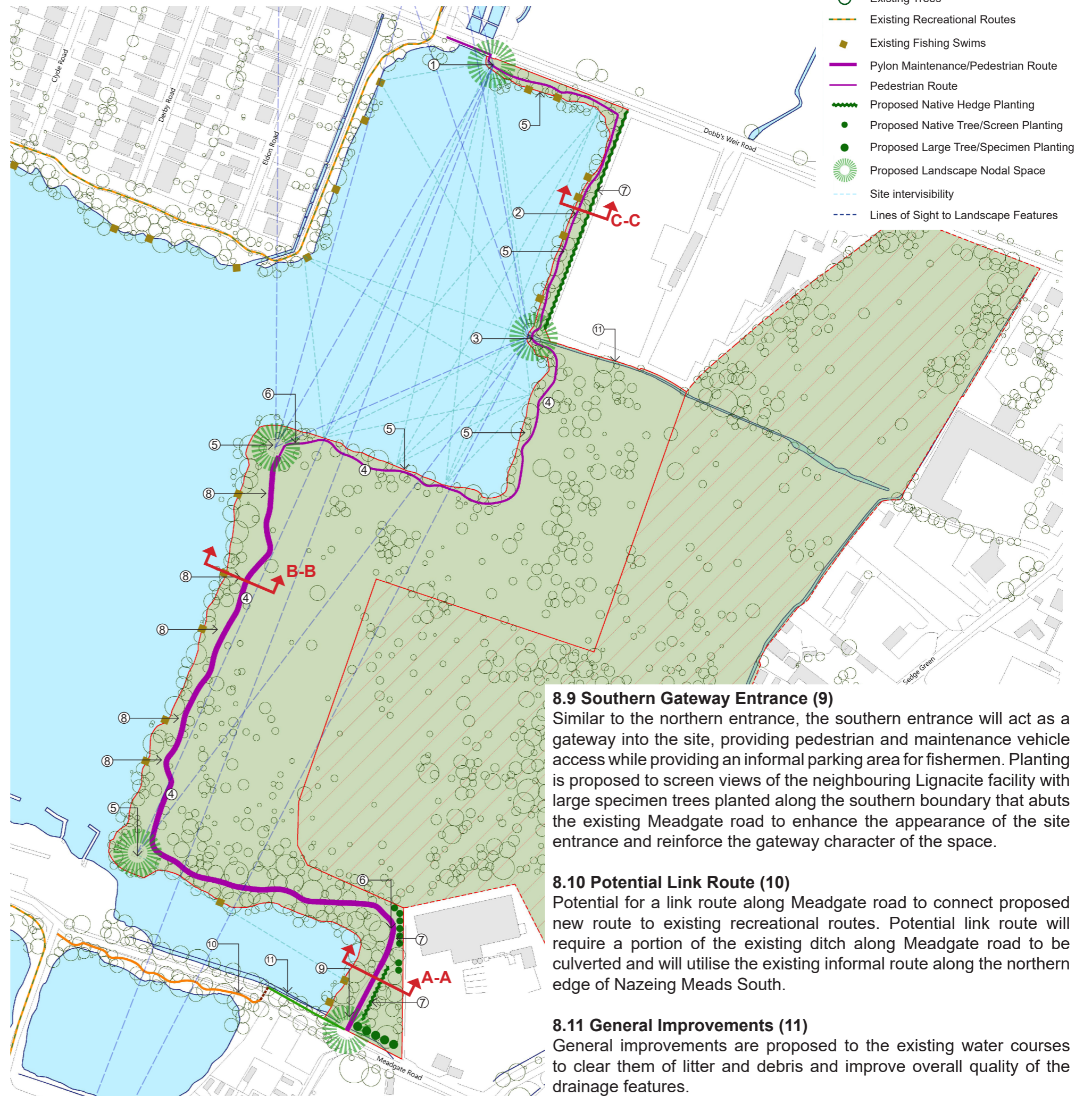
To prevent mopeds and quad bikes and other forms of anti-social behaviour, kissing gates will be provided to restrict access.

## 8.7 Defensible Planting (7)

Defensible planting is proposed along the glasshouse site and Lignacite boundaries. The intent for the planting proposals is to keep users away from these boundaries and screen the facilities as much a practical.

## 8.8 Enhancement Planting (8)

The intent for the planting proposals is to enhance the rural character of the site with a focus on attracting wildlife, and enhancing biodiversity. Planting proposals will consist of existing native species found on site used along the route to enhance the character of the site and reflect its new function as a high value recreational resource.



## 8.9 Southern Gateway Entrance (9)

Similar to the northern entrance, the southern entrance will act as a gateway into the site, providing pedestrian and maintenance vehicle access while providing an informal parking area for fishermen. Planting is proposed to screen views of the neighbouring Lignacite facility with large specimen trees planted along the southern boundary that abuts the existing Meadgate road to enhance the appearance of the site entrance and reinforce the gateway character of the space.

## 8.10 Potential Link Route (10)

Potential for a link route along Meadgate road to connect proposed new route to existing recreational routes. Potential link route will require a portion of the existing ditch along Meadgate road to be culverted and will utilise the existing informal route along the northern edge of Nazeing Meads South.

## 8.11 General Improvements (11)

General improvements are proposed to the existing water courses to clear them of litter and debris and improve overall quality of the drainage features.



Using live willow structures to create New feature bridge will provide a design feature along the route and a landscape features that will encourage viewing location over Nazeing Meads North. interaction and attract visitors to the site

New recreational route of compacted gravel in buff tones. New route will be universally assessable and create a new recreational assets within the Lee Valley Regional Park.



Planting proposals will enhance the rural character of the site with a focus on attracting wildlife, and enhancing biodiversity.

Access to fishing swims is to be retained for fishermen. Defensible planting will aid in limiting access to the fishing swims by the general public, reducing potential maintenance issues..



Timber vehicular and pedestrian kissing gate to restrict access for mopeds, quad bikes and other anti-social behaviours.

Timber bench to reinforce the rural character located along the new route to provide rest and viewing areas.



Feature bird hide to encourage bird watchers to the site to reinforce the creation of an active, multi-functional recreational route.

Proposed tree planting to screen neighbouring Lignacite site.

Proposed tree planting to screen neighbouring Lignacite site.



Proposed maintenance and management of existing vegetation (pollarding parctices) to improve quality and amenity value.

Proposed vehicular gate and kissing gate (to reflect rural character) to provide service vehicle and pedestrian access while restricting ATV/scooter/moped access

Proposed native shrub planting screen neighbouring site and enhance entrance to St Paul's Field

Proposed maintenance and management of existing vegetation (pollarding parctices) to improve quality and amenity value.

### Landscape Section A-A



Proposed maintenance and management of existing vegetation (pollarding parctices) to improve quality and amenity value.

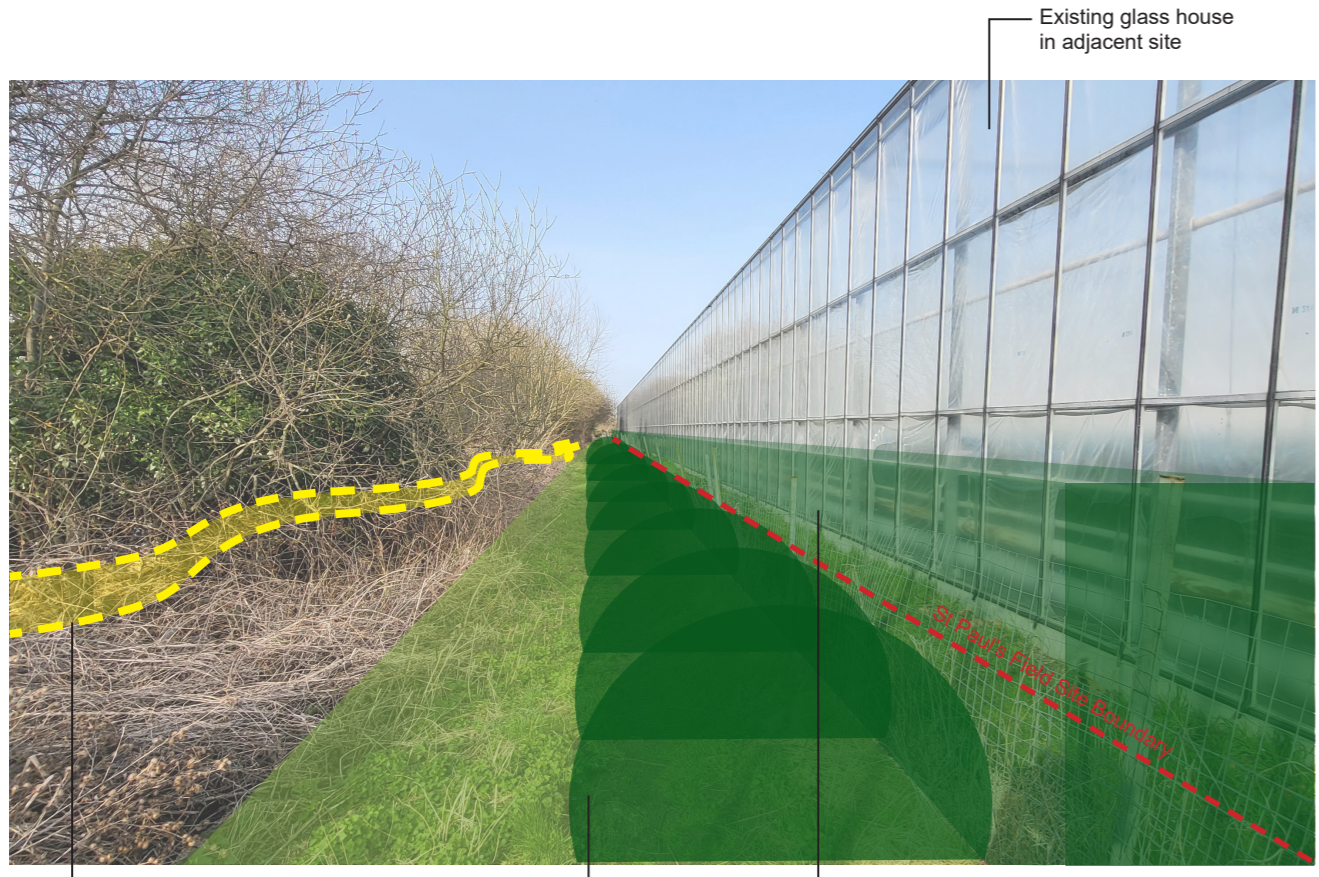
Proposed vehicular gate and kissing gate (to reflect rural character) to provide service vehicle and pedestrian access while restricting ATV/scooter/moped access

Proposed tree planting to screen neighbouring Lignacite site.

St Paul's Field Site Boundary

Proposed route to follow existing alignment as far as practical.





Existing glass house in adjacent site

Proposed route located away from site boundary and realigned between existing trees. New alignment will bring visitors closer to the waters edge and away from the adjacent glass house for a more pleasant user experience.

Proposed native shrub planting to create defensible edge

Proposed native hedge planting along site boundary

### Landscape Section B-B



Proposed maintenance and management of existing (pollarding parctices) vegetation to improve quality and amenity value.

St Paul's Field Site Boundary

Proposed route located away from site boundary. New alignment will bring visitors closer to the waters edge and away from the adjacent glass house for a more pleasant user experience.

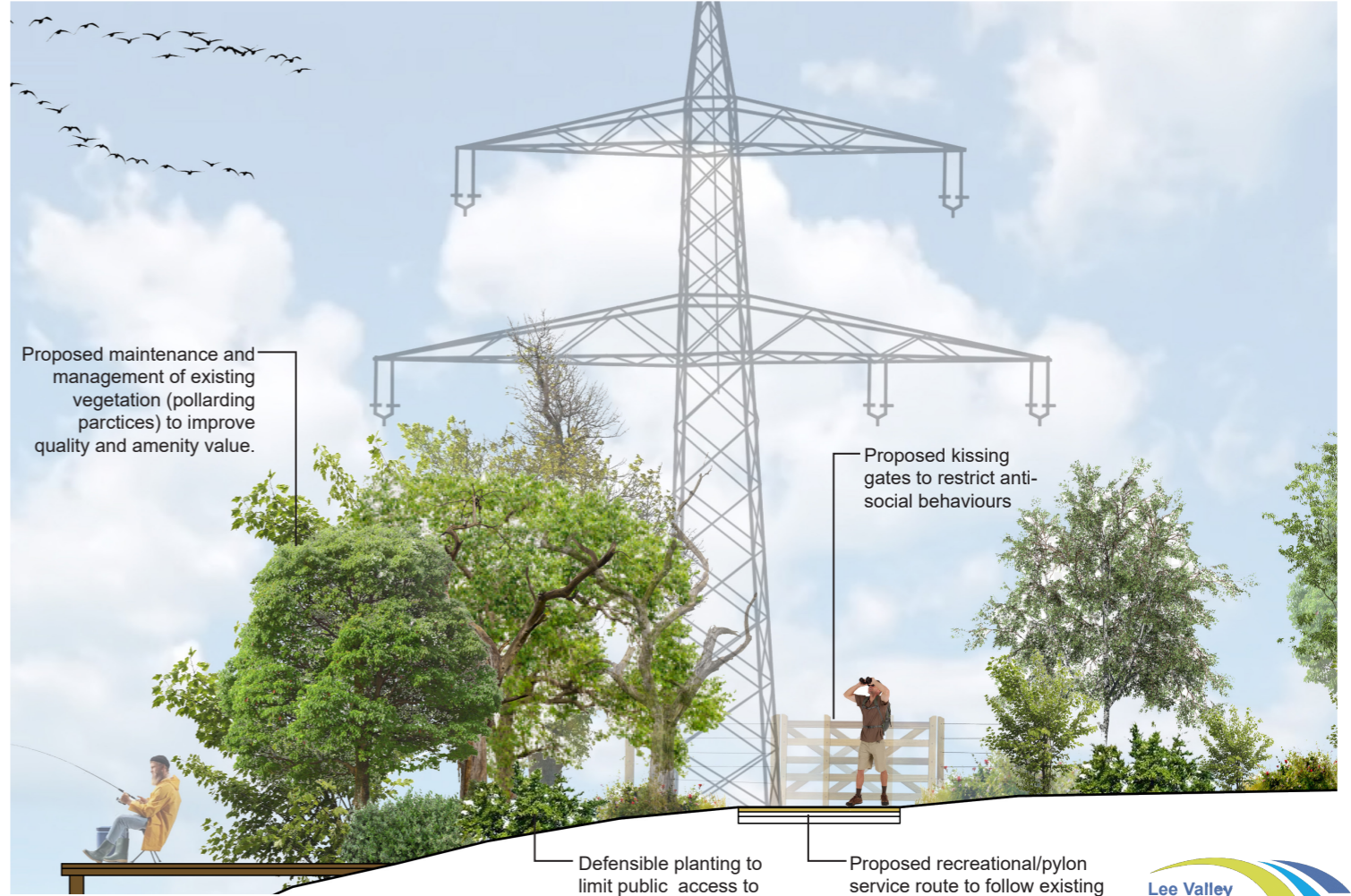
Proposed native hedge planting along site boundary



Proposed recreational/ pylon service route to follow existing alignment as far as practical.

Proposed native planting along recreational/service route to create defensible edge to fishing swims access and enhance amenity of the Site.

### Landscape Section C-C

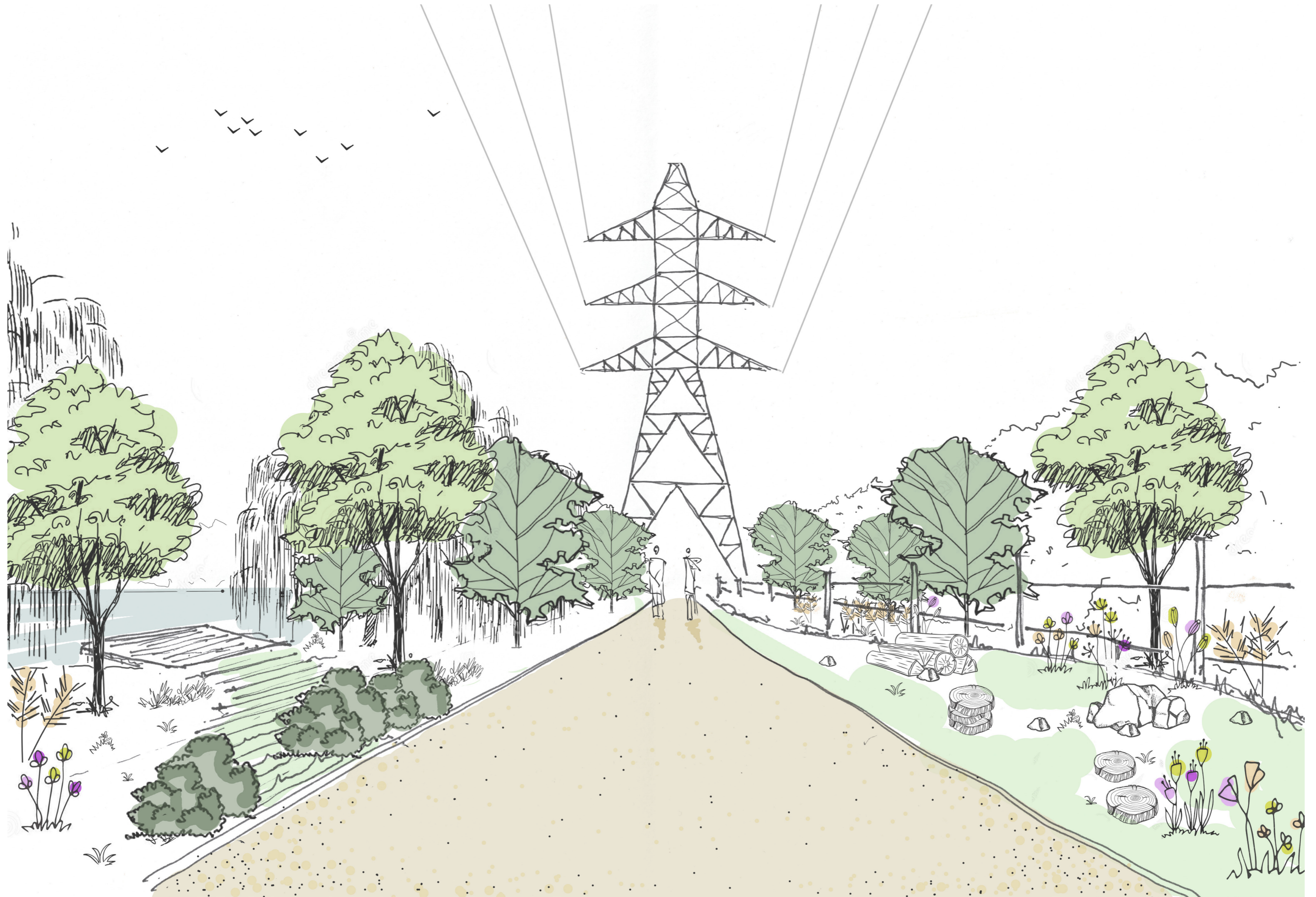


Proposed maintenance and management of existing vegetation (pollarding parctices) to improve quality and amenity value.

Proposed kissing gates to restrict anti-social behaviours

Defensible planting to limit public access to fishing swims.

Proposed recreational/pylon service route to follow existing alignment as far as practical.





View Across 'Nazeing Meads North' Looking Southwest


## 9. Appendix A - Baseline Drawings and Constraint & Opportunities Drawing

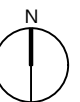


LEE VALLEY REGIONAL PARK  
AUTHORITY



**Key**

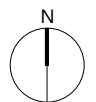
 Location of St Paul's Field within Lee Valley Regional Park



**Figure 1**  
Site Location  
**St Paul's Field, Lee Valley**

Key

- Lee Valley Regional Park Boundary
- Extent of Site
- Neighboring Land for Potential Access



**Figure 2**  
Aerial Photography  
St Paul's Field, Lee Valley

Key

- Lee Valley Regional Park Boundary
- Extent of Site
- Neighboring Land for Potential Access
- Flood Zone 1
- Flood Zone 2
- Flood Zone 3

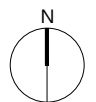
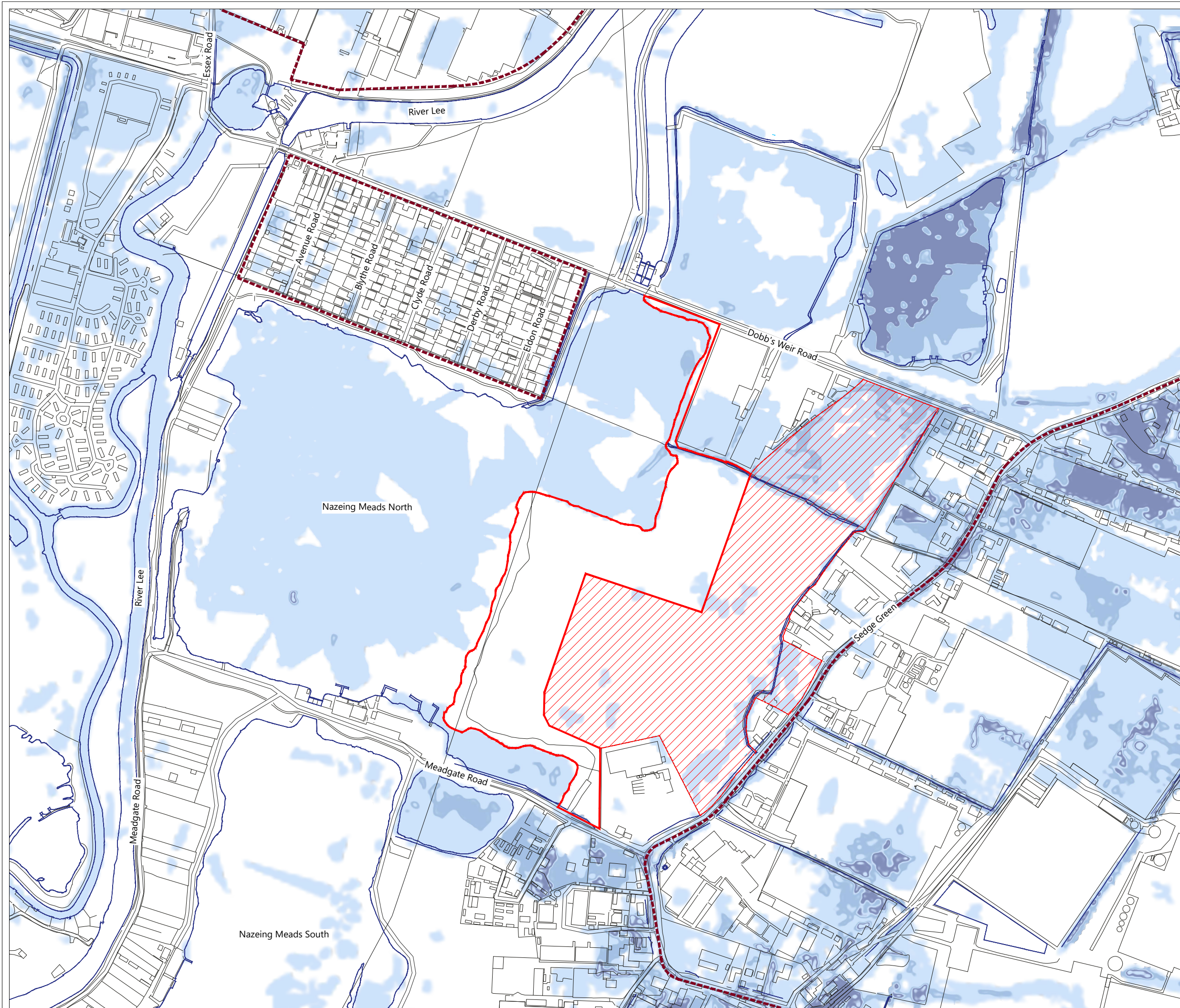


Figure 3

Flood Risk from Surface Water  
St Paul's Field, Lee Valley

Key

- Lee Valley Regional Park Boundary
- Extent of Site
- Neighboring Land for Potential Access
- Flood Zone 2
- Flood Zone 3

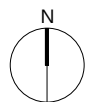
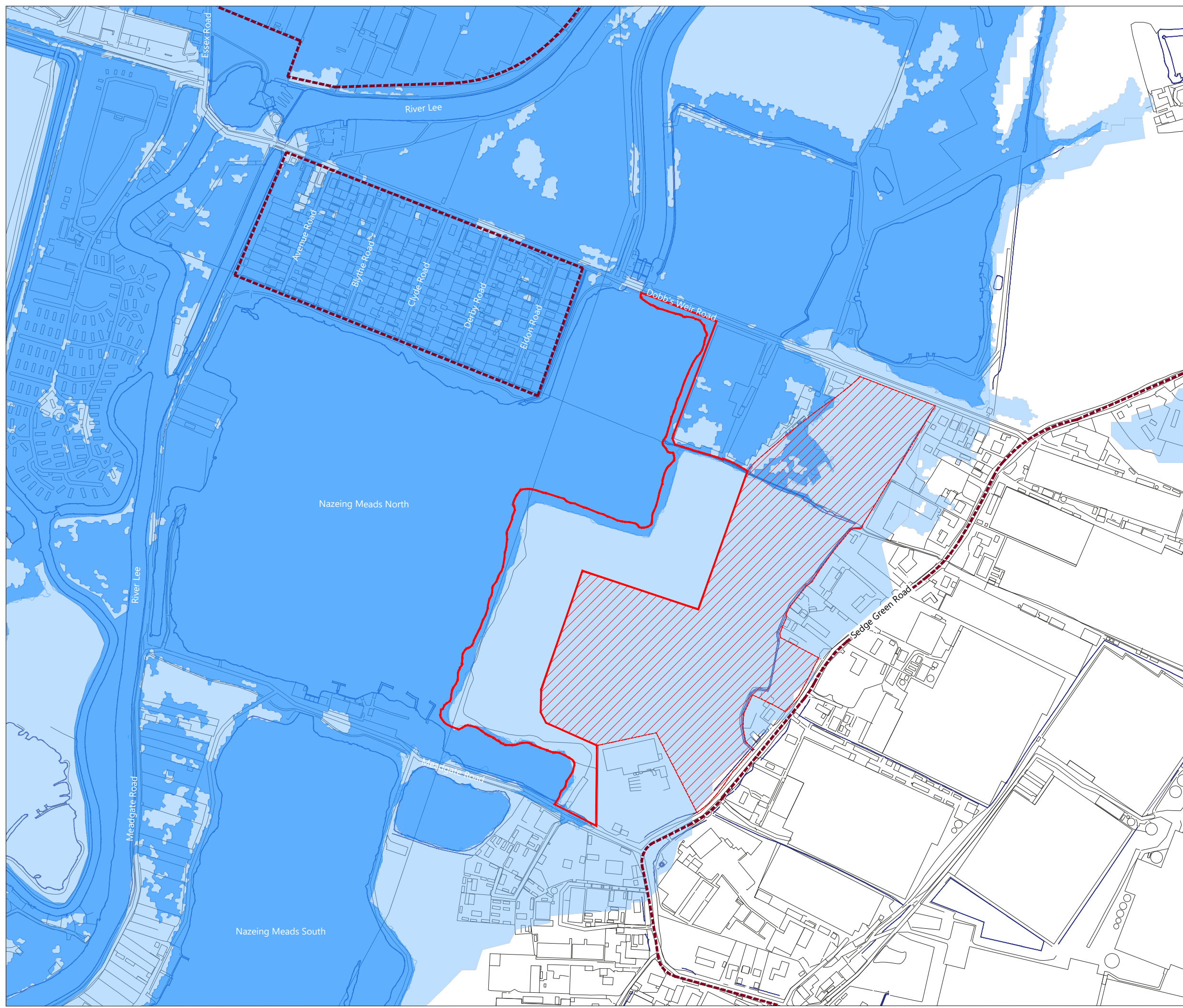


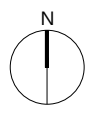
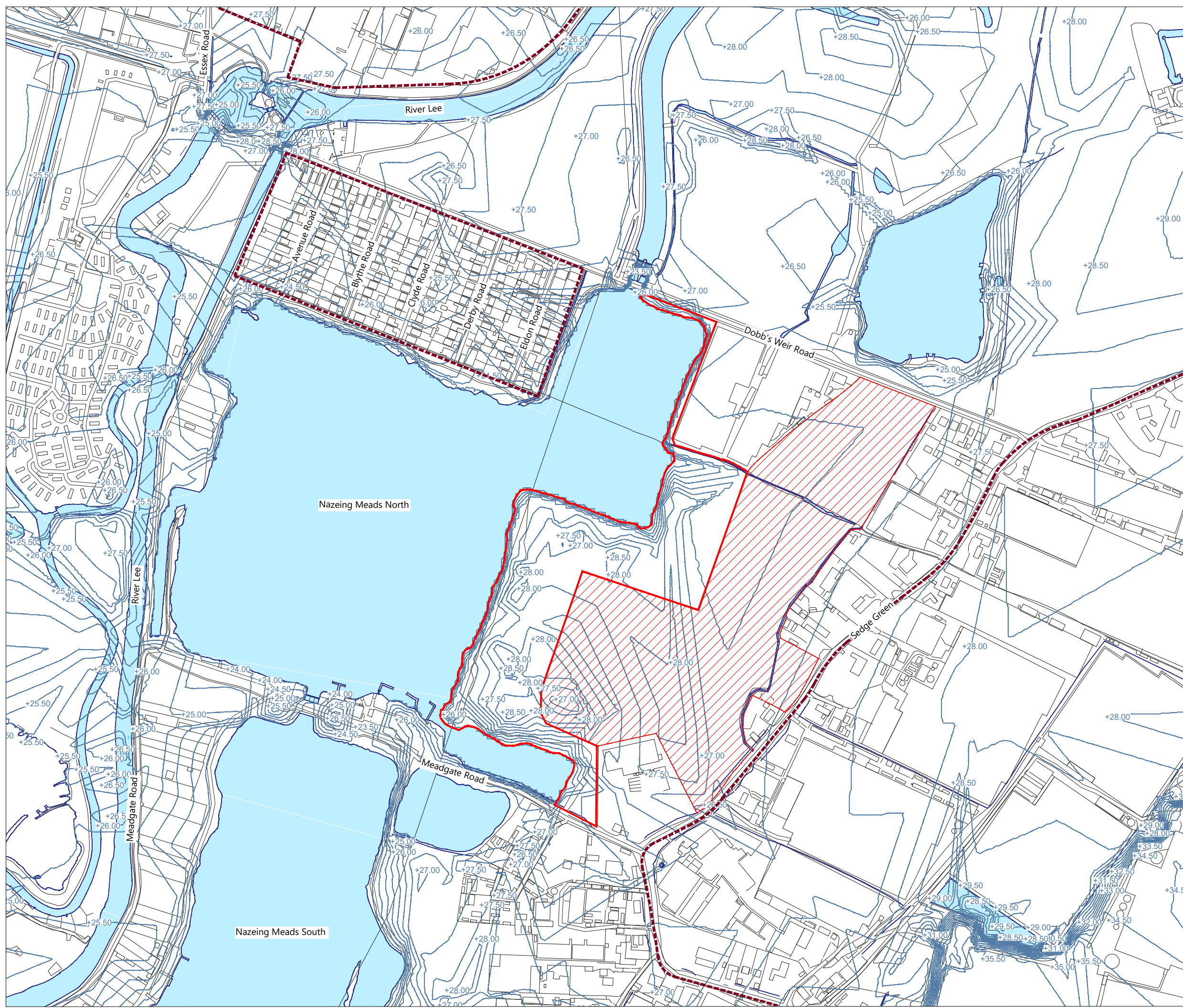
Figure 4

Flood Risk from Rivers & Sea  
St Paul's Field, Lee Valley






**Key**

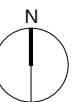
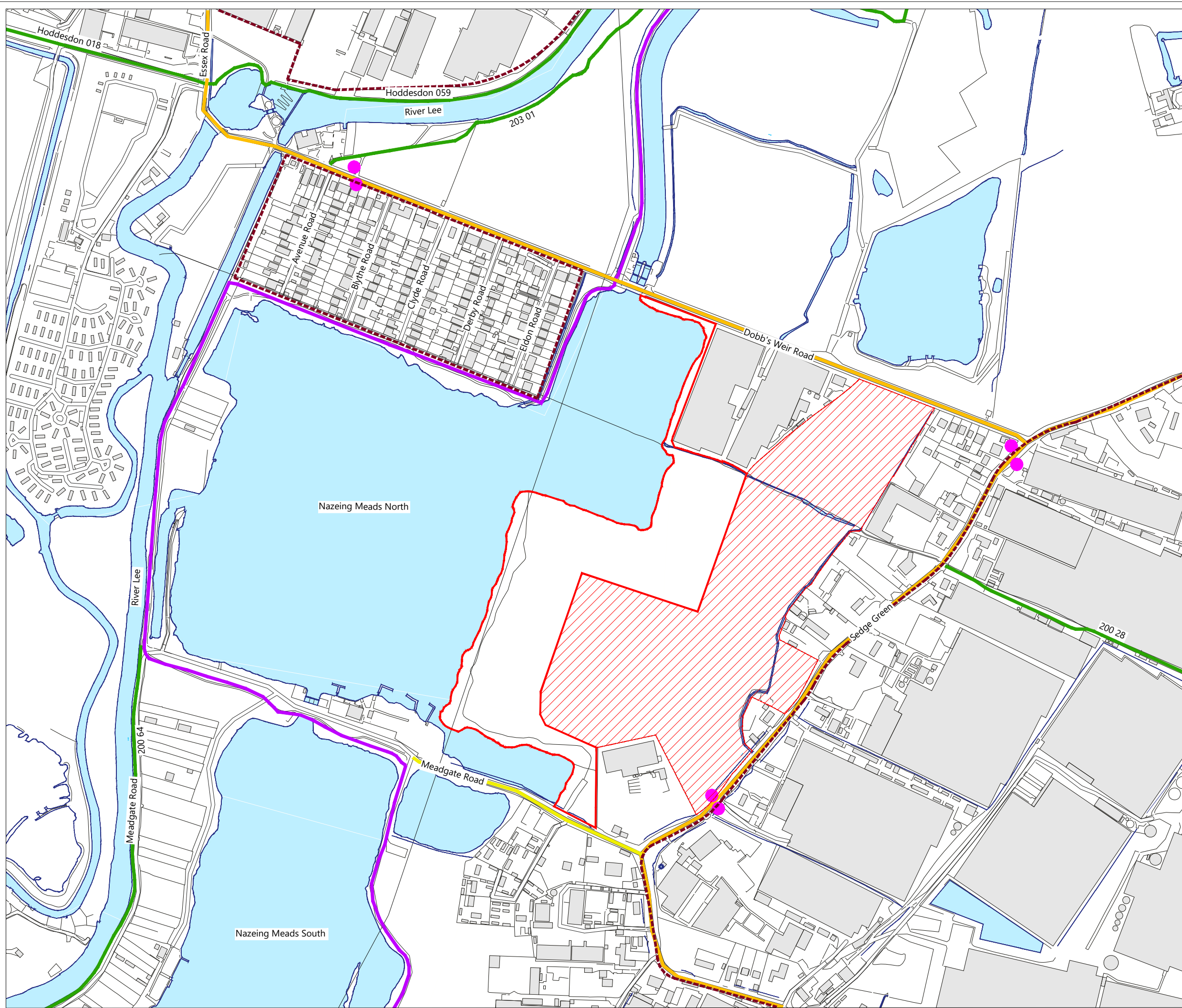
- Lee Valley Regional Park Boundary
- Extent of Site
- Neighboring Land for Potential Access
- 0.5m Contours



**Figure 5**  
Levels and Topography  
St Paul's Field, Lee Valley





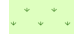


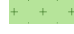


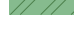


**Key**

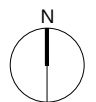
-  Lee Valley Regional Park Boundary
-  Extent of Site
-  Neighboring Land for Potential Access
-  Public Footpath
-  National Cycle Network Route 1
-  B Road
-  Road less than 4m
-  Bus Stop



**Figure 6**  
Circulation & Connectivity  
Land North of Caistor Lane















**Key**

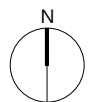
-  Lee Valley Regional Park Boundary
-  Extent of Site
-  Neighboring Land for Potential Access
-  Existing trees
-  Unimproved Grassland
-  Reeds
-  Shrub & Unimproved Grassland
-  Shrub
-  Broadleaf Woodland
-  Broadleaf Woodland & Shrub
-  Coniferous Woodland
-  Coniferous Woodland & Shrub
-  Mixed Woodland



**Figure 7**  
Vegetation  
St Paul's Field, Lee Valley

**Key**

-  Lee Valley Regional Park Boundary
-  Extent of Site
-  Neighboring Land for Potential Access
-  Ep5 Lee Valley Central Local Wildlife Site
-  Existing trees
-  Tale of Two Rivers & Rye Meads  
Discovery Cycle Routes
-  Fishers Green Foray Walk & Peddlers  
Paradise Running & Cycle Routes
-  Existing Drainage Ditch
-  Existing Pylons
-  Existing Maintenance Route for Pylons  
and Access for Fishermen
-  Primary Access and Car-parking Area for  
Fisherman Access Only
-  Fishermen's Platform
-  Evidence of Badger Setts along Existing  
Maintenance Route to be confirmed in  
Preliminary Ecological Assessment
-  Existing Pylon Overhead Lines



**Figure 8**  
Local Site Features  
St Paul's Field, Lee Valley



**NOTES**

Do not scale from this drawing electronically or manually, use written dimensions only.

All dimensions are in millimeters unless stated otherwise.

This drawing is produced for use in this project only and may not be used for any other purpose. Lanproservices Ltd. accept no liability for the use of this drawing other than the purpose for which it was intended in connection with this project as recorded on the title fields 'Purpose for Issue' and 'Drawing Status Code'.

This drawing may not be reproduced in any form without prior written agreement of Lanproservices Ltd.

© Crown copyright and database rights 2022  
Ordnance Survey Licence Number 0100031673

CDM 2015

The Construction (Design and Management) Regulations 2015 (CDM 2015) makes a distinction between domestic and commercial clients and outlines the duties you, as client, have under Health and Safety Law (HSE).

These duties can be found at:  
<http://www.hse.gov.uk/construction/cdm2015/responsibilities.htm>

It is your responsibility as client to make yourself aware of your role within CDM 2015 and act accordingly.

- Key**
- Site Boundary
- Landscape Constraints**
- 400KV Pylon  
Existing prominent structures within the site however they are characteristic of the fabric of the Lee Valley
  - 400KV Pylon Overhead Lines
  - Existing Topography
  - Area Displaying Evidence of Badger Setts to be confirmed in Preliminary Ecology Assessment
  - Area of Cleared Vegetation  
evidence of and disturbance thought to be associated with Lignite
  - Area of Dense Tree and Scrub Vegetation  
dense vegetation matching access potentially resulting in a greater disturbance upon the landscape due to landscape works
  - Surface Water - High Extent of Flooding
  - Surface Water - Medium Extent of Flooding
  - Surface Water - Low Extent of Flooding
  - Adjacent Road Network  
with a limited amount of roadside paths limiting potential linkage to existing routes
  - Existing Roadside Green Verges  
no pavement limiting potential linkage to existing routes
  - Existing Commercial Sites Adjacent to Site Boundary  
careful consideration of potential treatment to site boundaries is required

- Landscape Opportunities**
- Existing Car Park for Fisherman Use Only
  - Existing Fisherman Swims  
provide opportunities for views of Nazing Meads and provides amenity function to the site
  - Existing Vegetation  
to be retained and enhanced with maintenance operations carried out where required, improving overall quality of vegetation and ecological value
  - Existing Track for Pylon Maintenance and Fisherman Swim Access  
provides opportunities for alignment of new route with minimal disturbance to the existing landscape
  - Existing Roadside Path  
opportunities for linkage with existing routes
  - Existing Site Access
  - Neighboring Land for Potential Access Opportunities
  - Reinforcement to Waters Edge  
through management of waterfront vegetation to enhance ecology landscape character and views of Nazing Meads and the amenity value of new route
  - Reinstate / Repair Existing Timber Bridge
  - Potential Point of Linkage with Existing Recreational Routes
  - Potential for Design Feature  
location provides dual aspect over Nazing Meads and is an important landscape node along the route
  - Existing Lee Valley Recreational Routes  
opportunities to connect to existing recreational routes enhancing the Lee Valley circulation network
  - Existing National Cycle Network Route 1  
opportunities to connect to the National Cycle Network
  - Views over Nazing Meads  
opportunities to enhance views over Nazing Meads creating a stronger relationship between the user and the landscape

REVISED BY:	DATE:	CHECKED BY:	DATE:
PURPOSE OF ISSUE <b>IN - For Information</b>			RIBA STAGE <b>2</b>
DRAWING STATUS <b>S2 - Fit For Information</b>			
PROJECT TITLE <b>St Paul's Field</b>			
CLIENT <b>Lee Valley Regional Park Authority</b>			
DRAWING TITLE <b>Landscape Constraints and Operations Plan</b>			SCALE <b>1/2500@A2</b>
DATE <b>04/03/22</b>	DRAWN BY <b>KOB</b>	CHECKED BY <b>MT</b>	APPROVED BY <b>MT</b>
DRAWING NUMBER <b>3204 - 00 - 101 -</b>			

**Lanpro**

Architecture | Masterplanning | Landscape & Urban Design | Architecture

Norwich Office: Brettingham House, 98 Pottergate, Norwich, NR2 1EQ  
Tel: 01603 631 319  
[www.lanproservices.co.uk](http://www.lanproservices.co.uk)



# ST PAUL'S FIELD, LEE VALLEY

Landscape and Path Network Design

